

Osage Point Vision

Osage Point Townhomes will be the most aggressive single family residential construction project in Fairfield Bay in more than 25 years!

Osage Point Townhomes will be a 20 unit townhome development consisting of 10 buildings with 2 units per building!

Osage Point, with a stunning panoramic view of eastern Greers Ferry Lake, looks down from a height of up to 1150 feet!

Osage Point Townhomes offer a panoramic view from the kitchen, living room, master bedroom, dining room, loft, patio, and even the front entry!

The Osage Point open floor plan has 1506 square feet of main level living space, ADA assessable and 517 square feet of bedroom loft, conditioned storage space on the second level! Base unit: 3Br, 2 Baths.

Osage Point Townhomes are functionally designed with features that include dramatic high sloping ceilings, large windows, floor coverings of hardwood, ceramic tile, carpet, and granite countertops!

Osage Point offers a feature not known to be offered anywhere else in our area. This would be the "Toy House". A large optional disconnected garage to accommodate the "toys" of your life.



501-723-8364

Building Tomorrow Today!

www.ozarkresorthomes.com

Your Builder/Contractor

Please contact our
Realtor Team at
844-99-OSAGE (844-996-7243)
for pricing and availability

Fairfield Bay Realty, Inc.

Goodwin & Herman Associates, LLC

Re/Max On the Bay

Tice Realty

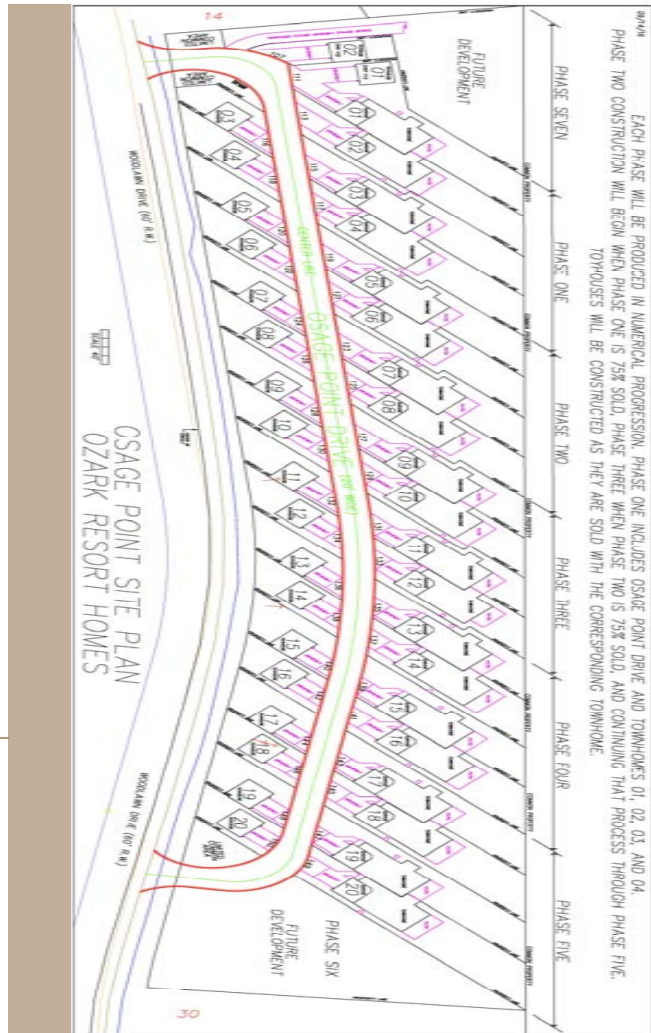
CLL10182017

OSAGE POINT

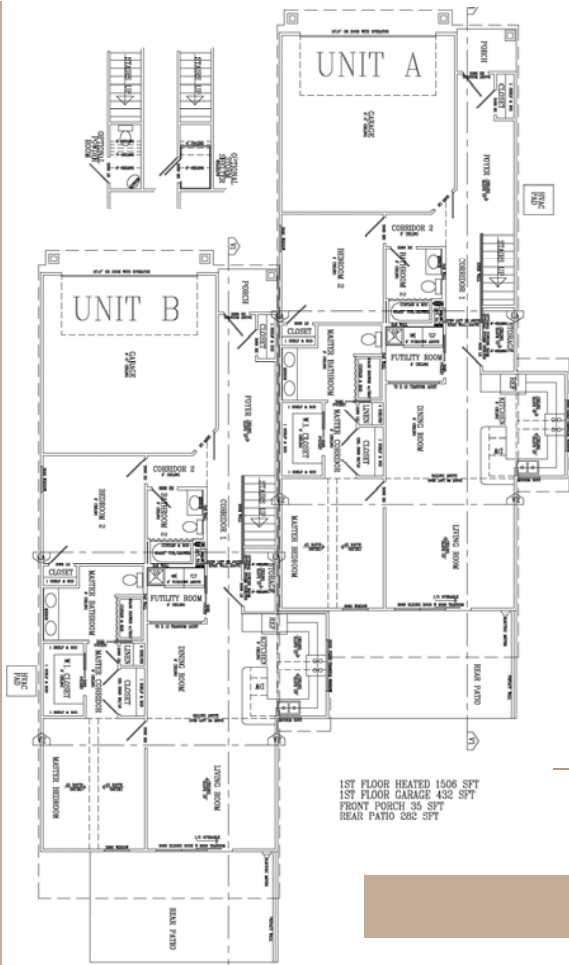
LUXURY

TOWNHOMES





- 1,506 Sft First Floor
- 517 Sft 2nd Floor Level Bedroom/Loft
- **2,023 Sft Total Finished**
- 256 Sft Second Floor Level Conditioned Storage / Mechanical Space
- **2,279 Sft Total Conditioned Space**
- 432 Sft Main Garage
- 35 Sft Front Porch
- 282 Sft Rear Concrete Patio



1ST FLOOR HEATED 1506 SFT
 1ST FLOOR GARAGE 432 SFT
 FRONT PORCH 35 SFT
 REAR PATIO 282 SFT

UNITS A & B



2ND FLOOR HEATED 510 SFT
 2ND FLOOR STORAGE / MECHANICAL 256 SFT

